

Multiple Member Connections



Report CBP0603-1

LedgerLok® is for fastening ledgers to wall panels.

ADVANTAGES

FASTER & EASIER

- Self-drilling screws that require **no pre-drilling**
- Zip right in

STRONGER

- **Higher lateral capacity** than nails or screws of similar diameter

MORE DURABLE

- Manufactured from heat-treated steel with multi-layer epoxy coating to protect against corrosion

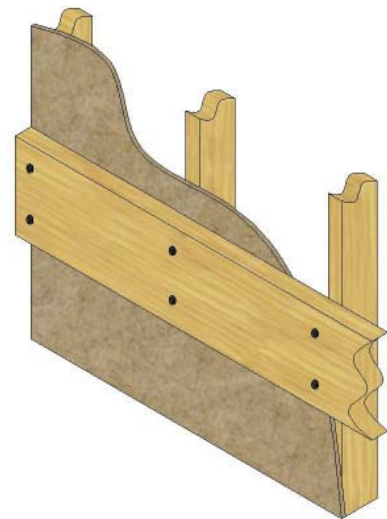
LedgerLok® fasteners are available in two lengths:

- 3 5/8" (92mm) for ledger connections
- 5" (127mm) for ledger connections with higher uniform load resistance values

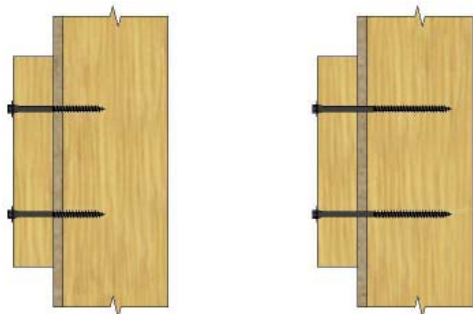
The fastener length is marked on the head for positive identification once installed.

Fastener length clearly marked	
Multi coated for guaranteed corrosion protection. ACQ approved.	
Heat treated steel for increased strength and drivability	
Super sized threads for increased holding power	
Gimlet point for fast drilling	

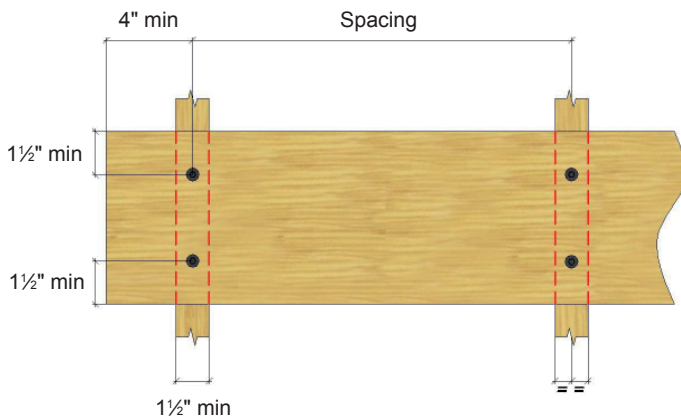
Head Style		0.31" (7.8mm) Hex Drive
Diameters	Shank	0.23" (5.8mm)
	Outer Thread	0.30" (7.7mm)
	Inner Thread	0.20" (5.1mm)
Thread Length		1.97" (50mm)



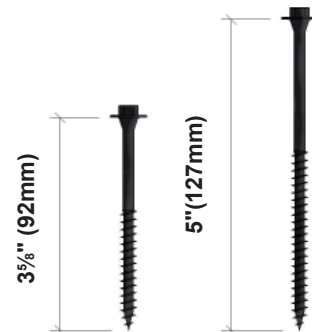
Typical connection of ledgers fixed to studs using pairs of LedgerLok® fasteners at 16" o.c. spacing



LedgerLok® in situ



Sheathing has been omitted for clarity



LedgerLok® fasteners are available in 2 lengths

Multiple Member Connections



LedgerLok® - For Side-Loaded Ledgers

Side-loaded Ledger to SPF Studs

LedgerLok® for use with pressure treated dimensional lumber ledgers

Factored Uniform Load Resistance For Attachment of Ledger												
Screw Size	2 rows - 24" o.c.		2 rows 16" o.c.		3 rows - 24" o.c.		3 rows - 16" o.c.		4 rows 24" o.c.		4 rows - 16" o.c.	
	kN/m	PLF	kN/m	PLF	kN/m	PLF	kN/m	PLF	kN/m	PLF	kN/m	PLF
3½" LedgerLok®	2.7	187	4.1	281	4.1	281	6.1	421	5.5	374	8.2	561
5" LedgerLok®	3.0	206	4.5	309	4.5	309	6.8	463	6.0	412	9.0	618

Notes:

1. Fastener values based on CSA 086 and Derivation of Canadian Design Properties for TrussLok®, TrussLok-Z®, and LedgerLok® Screws report.
2. Use specific gravity of 0.42 when designing lateral connections.
3. Values are listed for Kd = 1.0.
4. Minimum end distance is 4", minimum edge distance is 1½".
5. LedgerLok® screw minimum spacing in a row = 4" o.c.
6. 24" o.c. connection value may be doubled for 12" o.c. spacing.
7. Two (2) row connection allowed for 2x4 and deeper ledgers, three (3) row connection allowed for 2x8 and deeper ledgers, middle row to be on centreline of beam, four (4) row connection allowed for 2x10 and deeper beams, middle rows spaced evenly between outer rows.

Basic Withdrawal Resistance (N/mm) of Lumber Species Groups for the FastenMaster range

Fastener	Douglas Fir (G=0.49)		Hem Fir (G=0.46)		Spruce-Pine-Fir (G=0.42)		Northern Species (G=0.35)	
	N/mm	lbs/in	N/mm	lbs/in	N/mm	lbs/in	N/mm	lbs/in
TrussLok®	82	468	73	416	62	354	45	256
TrussLok-Z®	107	610	97	553	85	485	64	365
LedgerLok®	113	645	103	588	91	519	72	411


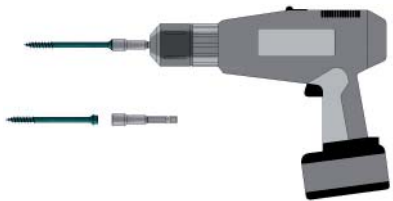
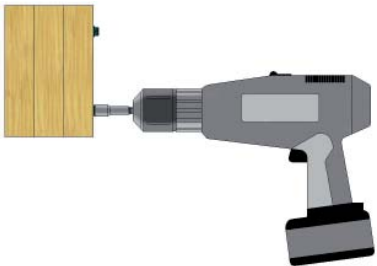
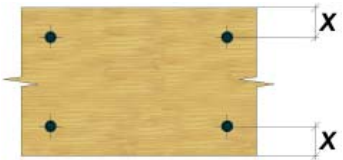
Notes on the FastenMaster range:

1. For applications outside the scope of those specified please contact Cullen Technical Department
2. To achieve stated figures always follow correct application and installation practice
3. FastenMaster®, TrussLok-Z®, TrussLok® & LedgerLok® are registered trademarks of OMG Inc.
4. Further information regarding FastenMaster is available on separate datasheets - Please contact Cullen Technical Department.

Multiple Member Connections



Installation

Stage 1	Stage 2
 <p>Select the correct FastenMaster fastener.</p> <p>TRUSSLOK® TRUSSLOK-Z® LEDGERLOK®</p> <p>TrussLok® - Multiple LVL, PSL & LSL members TrussLok-Z® - Multiple girder trusses & dimensional lumber LedgerLok® - For side-loaded ledgers</p>	 <p>Install using at least an 18V cordless drill (a hex driver bit is included in every box).</p> <p>No pre-drilling required</p>
Stage 3	Stage 4
 <p>Bring the underside of washer head flush with the timber surface.</p> <p>Do not countersink</p>	 <p>Always maintain the required minimum edge distance & spacing.</p> <p>These values vary</p>

TO ORDER FASTENMASTER:

TrussLok® for multiple LVL, PSL & LSL

Product code	Product Description	Box Quantity
FMTSL338-50	TrussLok fastener 3½"	50
FMTSL005-50	TrussLok fastener 5"	50
FMTSL634-50	TrussLok fastener 6¾"	50
FMTSL338B-250	TrussLok fastener 3½"	250
FMTSL005B-250	TrussLok fastener 5"	250
FMTSL634B-250	TrussLok fastener 6¾"	250

TrussLok-Z® for multiple girder trusses & dimensional lumber

Product code	Product Description	Box Quantity
FMTSZ278-50	TrussLok-Z fastener 2½"	50
FMTSZ412-50	TrussLok-Z fastener 4½"	50
FMTSZ006-50	TrussLok-Z fastener 6"	50
FMTSZ278B-500	TrussLok-Z fastener 2½"	500
FMTSZ412B-250	TrussLok-Z fastener 4½"	250
FMTSZ006B-250	TrussLok-Z fastener 6"	250

LedgerLok® for multiple Glulam & dimensional lumber

Product code	Product Description	Box Quantity
FMLL358-50	LedgerLok fastener 3¾"	50
FMLL005-50	LedgerLok fastener 5"	50
FMLL358-250	LedgerLok fastener 3¾"	250
FMLL005-250	LedgerLok fastener 5"	250



HEX DRIVER
BIT SUPPLIED WITH EVERY BOX
Additional drivers available on request