

Joist & Beam Connections

LI - Light I-Joist Hanger



CCMC Evaluation Report
No. 13281-R

The Cullen LI hanger has the ability to transfer loads without the need for either web stiffeners or **backer blocks** and is extremely quick and simple to install.

The LI has full height side flanges and a bearing length of 2¹⁵/₁₆". The product code is stamped on the hanger for simple identification.

ADVANTAGES

- No web stiffeners or **backer blocks** required
- Only one size of nail required
- Anti-rotation bar minimizes top flange rotation
- Unique bearing enhancers spread load over greater surface area

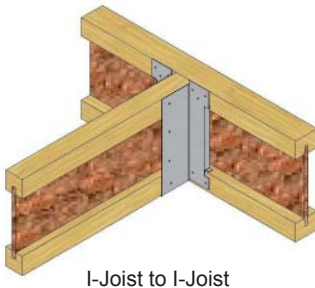
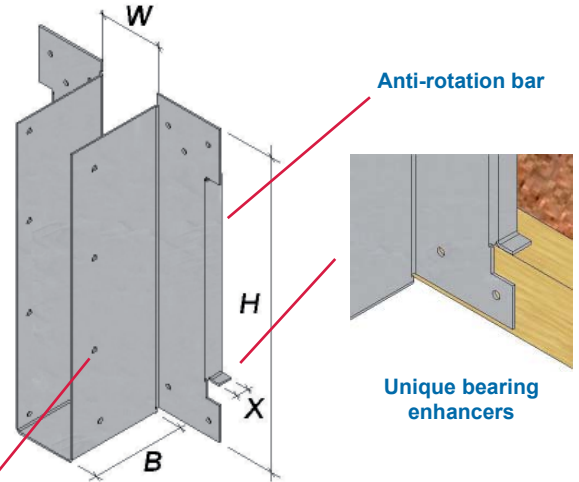
MATERIAL

- 14 ga. (0.078") galvanized mild steel - G90

FASTENER TYPE

- 10dx1¹/₂" nail

Patent Pending

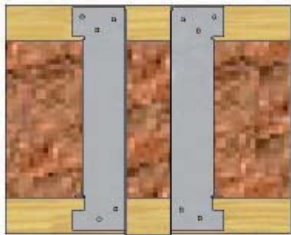


Optional triangular nail holes for enhanced uplift resistance (web stiffeners required)

Backer free I-Joist Hanger

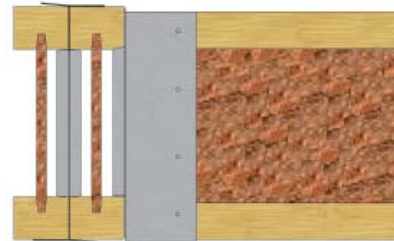
Installation

Stage 1

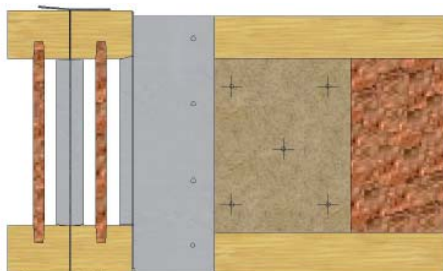


Position hanger against face of I-Joist ensuring bearing enhancers are located tightly onto bottom flange. Face fix to I-Joist using 10 nails.

Stage 2



Place incoming I-Joist into hanger and nail bottom 2 side holes.



I-Joist with web stiffeners

ENHANCED UPLIFT RESISTANCE

Enhanced uplift resistance can be achieved by using additional triangular nail holes in the side flanges. Where the incoming member is an I-Joist, fix web stiffeners in accordance with I-Joist manufacturer's technical guidelines.

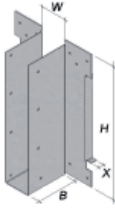
ENHANCED UPLIFT RESISTANCE		
Number of side nails 10dx1 ¹ / ₂ "	Uplift (Short-term) (Kd = 1.15)	
	kN	lbs
4	3.45	775
6	5.17	1162
8	6.90	1551

Joist & Beam Connections

LI - Light I-Joist Hanger

LI - Single/Double Joists - EWP

I-Joist Size	Product Code	Ga	Hanger Dimensions			Fasteners - 10dx1½"		Factored Resistance					
			W	H	B	Header	Joist	Uplift (Kd = 1.15)		SPF - I-Joist		LVL - I-Joist	
								kN	lbs	kN	lbs	kN	lbs
1½ x 9½	LI1.5/9.5	14	1⅞	9½	2⅝	10	2	1.72	386	10.29	2313	10.29	2313
1½ x 11⅞	LI1.5/11.88	14	1⅞	11⅞	2⅝	10	2	1.72	386	10.29	2313	10.29	2313
1¾ x 9½	LI1.75/9.5	14	1⅞	9½	2⅝	10	2	1.72	386	10.29	2313	10.29	2313
1¾ x 11⅞	LI1.75/11.88	14	1⅞	11⅞	2⅝	10	2	1.72	386	10.29	2313	10.29	2313
1¾ x 14	LI1.75/14	14	1⅞	14	2⅝	10	2	1.72	386	10.29	2313	10.29	2313
1¾ x 16	LI1.75/16	14	1⅞	16	2⅝	10	2	1.72	386	10.29	2313	10.29	2313
2⅞ x 9½	LI2.06/9.5	14	2⅞	9½	2⅝	10	2	1.72	386	10.29	2313	10.29	2313
2⅞ x 11⅞	LI2.06/11.88	14	2⅞	11⅞	2⅝	10	2	1.72	386	10.29	2313	10.29	2313
2⅞ x 14	LI2.06/14	14	2⅞	14	2⅝	10	2	1.72	386	10.29	2313	10.29	2313
2⅞ x 16	LI2.06/16	14	2⅞	16	2⅝	10	2	1.72	386	10.29	2313	10.29	2313
2⅞ x 9½	LI2.31/9.5	14	2⅞	9½	2⅝	10	2	1.72	386	10.29	2313	10.29	2313
2⅞ x 11⅞	LI2.31/11.88	14	2⅞	11⅞	2⅝	10	2	1.72	386	10.29	2313	10.29	2313
2⅞ x 14	LI2.31/14	14	2⅞	14	2⅝	10	2	1.72	386	10.29	2313	10.29	2313
2⅞ x 16	LI2.31/16	14	2⅞	16	2⅝	10	2	1.72	386	10.29	2313	10.29	2313
2½ x 9½	LI2.5/9.5	14	2⅞	9½	2⅝	10	2	1.72	386	10.29	2313	10.29	2313
2½ x 11⅞	LI2.5/11.88	14	2⅞	11⅞	2⅝	10	2	1.72	386	10.29	2313	10.29	2313
2½ x 14	LI2.5/14	14	2⅞	14	2⅝	10	2	1.72	386	10.29	2313	10.29	2313
2½ x 16	LI2.5/16	14	2⅞	16	2⅝	10	2	1.72	386	10.29	2313	10.29	2313
3 x 9½	LI3/9.5	14	3⅞	9½	2⅝	10	2	1.72	386	10.29	2313	10.29	2313
3 x 11⅞	LI3/11.88	14	3⅞	11⅞	2⅝	10	2	1.72	386	10.29	2313	10.29	2313
3½ x 9½	LI3.5/9.5	14	3⅞	9½	2⅝	10	2	1.72	386	10.29	2313	10.29	2313
3½ x 11⅞	LI3.5/11.88	14	3⅞	11⅞	2⅝	10	2	1.72	386	10.29	2313	10.29	2313
3½ x 14	LI3.5/14	14	3⅞	14	2⅝	10	2	1.72	386	10.29	2313	10.29	2313
3½ x 16	LI3.5/16	14	3⅞	16	2⅝	10	2	1.72	386	10.29	2313	10.29	2313



To order the LI

W dimension – Joist width e.g. 2½"

H dimension – Joist height e.g. 9½"

Example - Hanger required – LI2.5/9.5